



FIRE & RESCUE SERVICE

Fire Safety in Schools: Case study

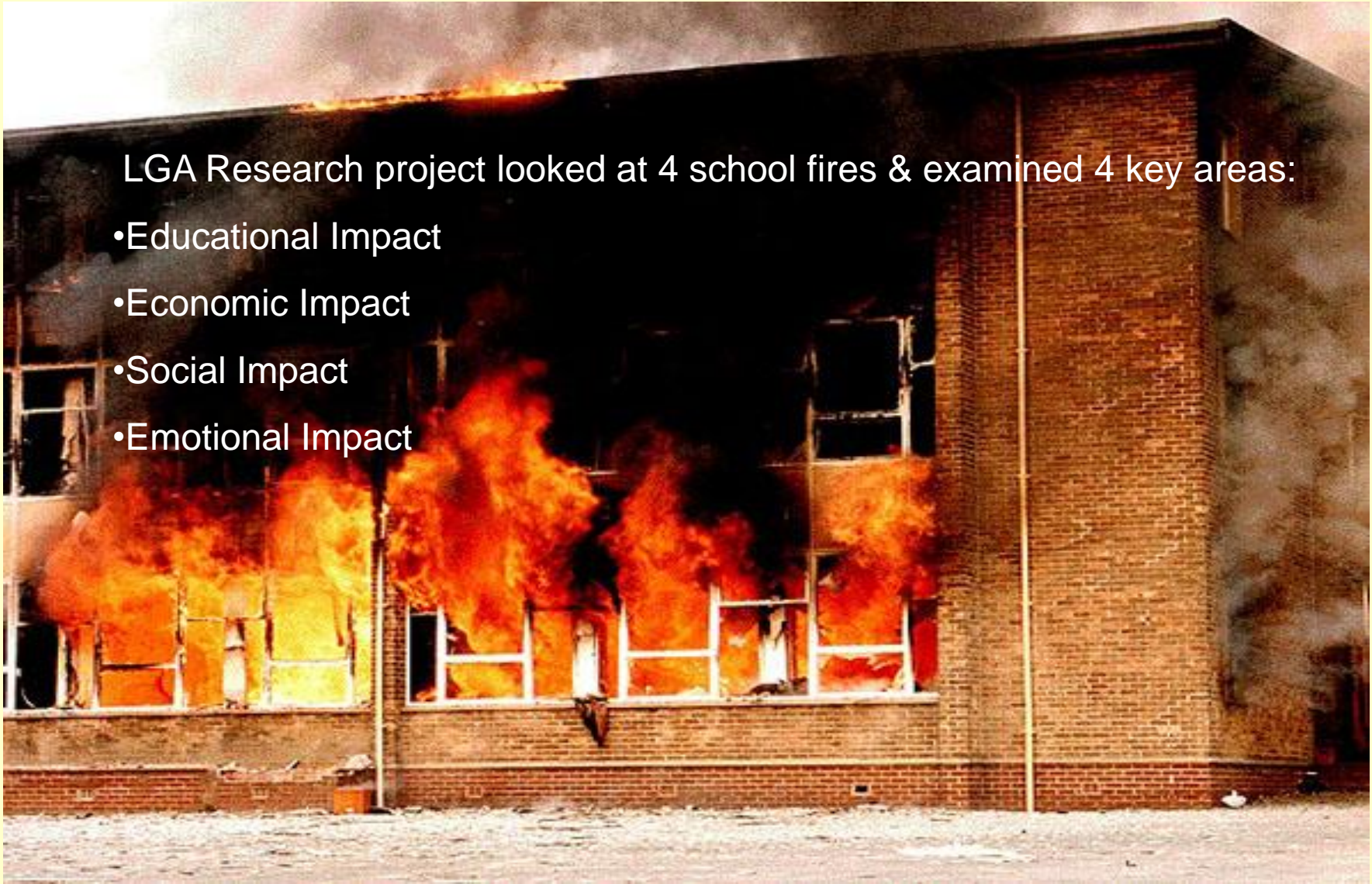


PREVENTING PROTECTING RESPONDING

Case Study

LGA Research project looked at 4 school fires & examined 4 key areas:

- Educational Impact
- Economic Impact
- Social Impact
- Emotional Impact



Educational Impact

- Key Stage Assessments & exams affected
- Displays, exam & archived work lost
- Ofsted inspection outcome affected
- Loss of school reputation
- School facilities
- Recruitment and retention of staff
- Administration files lost (achievement records)



PREVENTING PROTECTING RESPONDING

Economic Impact

- Time of year fire occurred
- Time required to determine lost items
- Loss of personal items – staff & Pupils
- Many items not replaceable (teachers lesson plans)
- Additional burden on School Management Team
- After school clubs disrupted



PREVENTING PROTECTING RESPONDING

Economic Impact

– Complex insurance claims

- Costs split between Insurance and LA (contents and Capital)
- Indirect costs (transport, removal, meals, refurbishing)
- 2 year process (2 claims equated to £1m, £1.2m)

– Lengthy process:

- Design (improved facilities, new for old!)
- Tendering (increased work of LA)
- Re Build
- Completion (site clearance)



PREVENTING PROTECTING RESPONDING

Social Impact

- Increased travel to alternative sites
- Fragmentation of friendships
- Disruption of area by reconstruction
- Lack of other school facilities e.g. craft, music, drama
- Lack of community facilities e.g. evening classes



PREVENTING PROTECTING RESPONDING

Social Impact

- Access and parking
- Parental care
- Economic impact on shops



PREVENTING PROTECTING RESPONDING

Emotional Impact

- Lowering of the moral of pupils & staff
- Pupils and Staff psychologically affected by the fire
 - pupil support required
reassurance
- The need to repeat work



PREVENTING PROTECTING RESPONDING

And finally!

“ I cannot imagine the feelings of the staff who have been here for 25 years, some of them 30 years. Their whole lives have been committed and devoted to this school. But it is actually the work inside the building, the students’ work, the artwork on the walls, the work that is on computer systems and so on, that cannot be replaced”



PREVENTING PROTECTING RESPONDING